



MONTHLY MEMBERSHIP PROGRESS REPORT

Results as of: 5/31/2016

Multiple District 38

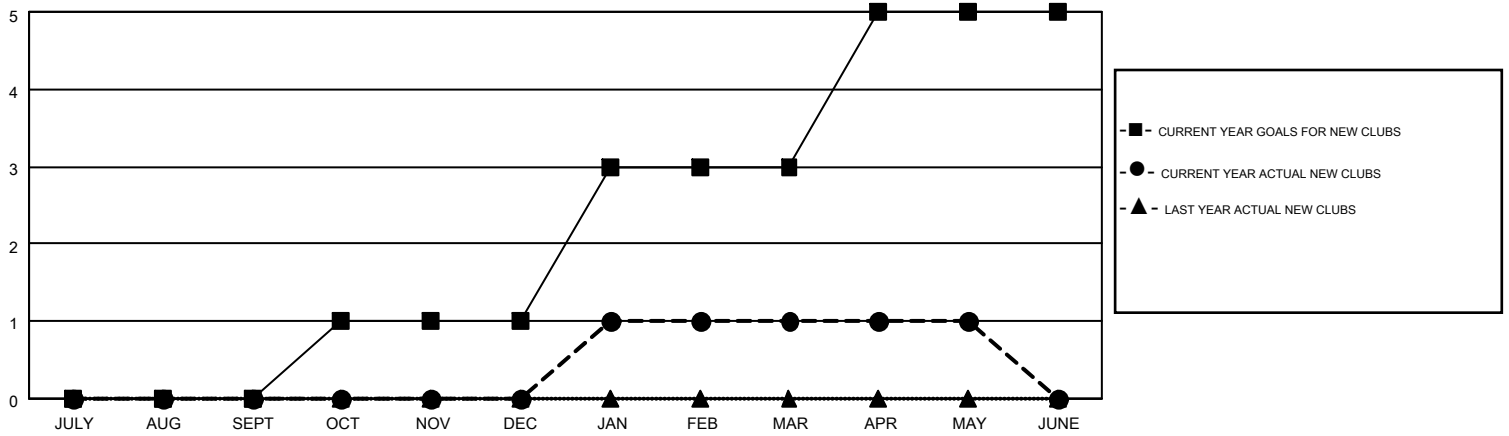
LOCATION: NEBRASKA

GMT: KENNETH SCHWOLS

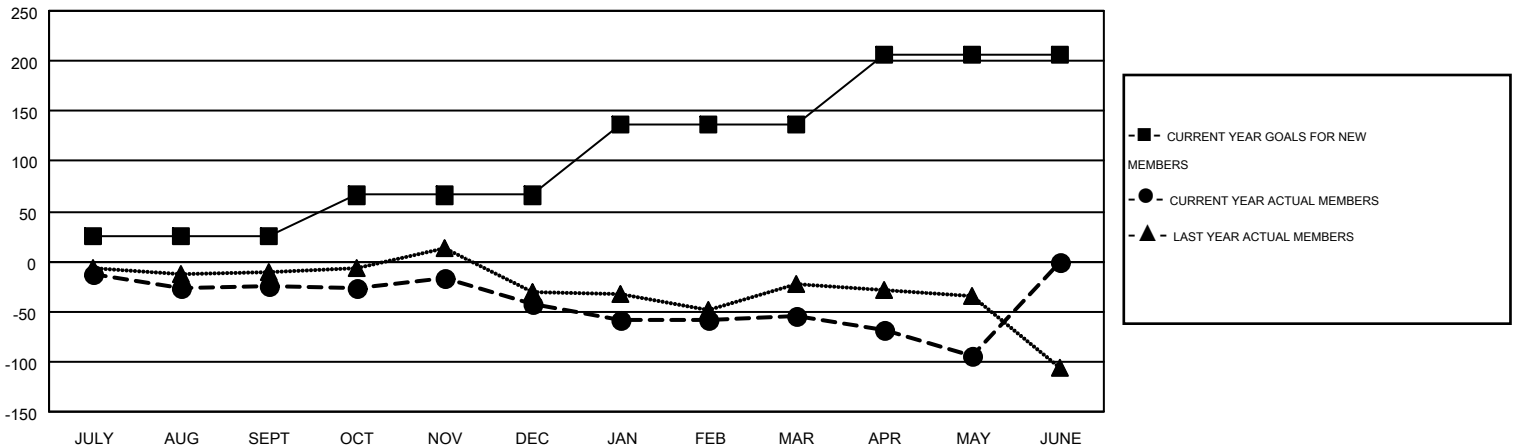
GMT CA 1

| Clubs | | | | | Members | | | | |
|-----------------------|---------------|-----------|---------------|---------------|-----------------------|-----------------|-------------------------------|-----------------|---------------|
| RESULTS FOR 2015-2016 | | | | | RESULTS FOR 2015-2016 | | | | |
| QUARTER | NEW CLUB GOAL | NEW CLUBS | DROPPED CLUBS | NET GAIN/LOSS | QUARTER | NEW MEMBER GOAL | CHARTER AND NEW MEMBERS ADDED | DROPPED MEMBERS | NET GAIN/LOSS |
| JULY/AUG/SEPT | 0 | 0 | 1 | -1 | JULY/AUG/SEPT | 26 | 59 | 84 | -25 |
| OCT/NOV/DEC | 1 | 0 | 2 | -2 | OCT/NOV/DEC | 40 | 78 | 95 | -17 |
| JAN/FEB/MAR | 2 | 1 | 1 | 0 | JAN/FEB/MAR | 71 | 88 | 101 | -13 |
| APR/MAY/JUNE | 2 | 0 | 0 | 0 | APR/MAY/JUNE | 69 | 24 | 63 | -39 |

GOALS AND ACTUAL NEW CLUBS CUMULATIVE



GOALS AND ACTUAL MEMBERS CUMULATIVE



| | | | |
|------------------------|---|---|----------------|
| DROPPED CLUBS: 4 | 71 CLUBS OF 140 ADDED 1 OR MORE NEW MEMBERS | <u>GENDER DISTRIBUTION</u> | |
| <u>DROPPED MEMBERS</u> | | MALE | 2,668 (75.05%) |
| DECEASED | 49 | FEMALE | 887 (24.95%) |
| CLUB CANCELLED | 25 | CLICK HERE FOR HEALTH ASSESSMENT DATA | |
| OTHER | 268 | FAMILY UNIT MEMBERS | 747 |
| TOTAL | 342 | HEAD OF HOUSEHOLD | 368 |
| | | NON-HEAD OF HOUSEHOLD | 379 |